



*by*

RAYMOND GAËTAN

ARCHITECTURE + DEVELOPMENT



Wohnung ab 1'040'000

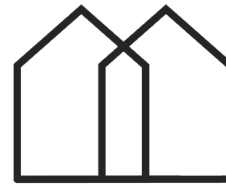
RAYMOND GAËTAN  
ARCHITECTURE + DEVELOPMENT



PARK LIFE

REFH ab 1'250'000

RAYMOND GAËTAN  
ARCHITECTURE + DEVELOPMENT



PARK LIFE

Dein Architekt

Standort

Unsere Vision

Konzept

Renderings

Grundrisse

Ausblick

## RAYMOND GAËTAN

ARCHITECTURE + DEVELOPMENT

Raymond Gaëtan has dedicated the last 24 years of his professional life to contextual architecture, that is, architecture adapted to its environment. In collaboration with Frank Gehry, Daniel Wentzlaff, Jacques Herzog & Pierre de Meuron, he has designed, planned and built over 25 world-renowned projects, from skyscrapers in Paris, New York and Miami to museums in New York and Hong Kong, and a master plan in the heart of the Los Angeles Arts District.

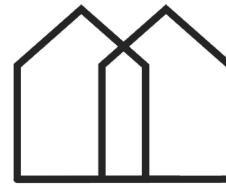
Raymond Gaëtan believes in the potential of combining "couture" architecture with residential real estate development. It was with this mindset that RGAD was founded in 2018.

Raymond Gaëtan | Architecture & Development



RAYMOND GAËTAN

ARCHITECTURE + DEVELOPMENT



PARK LIFE

1975 1999 2005 2008 2023

1975  
Born in Noranda, Québec, Canada

◆ 1995-1997  
Architectural studies (B Sci. / Arch), Laval University, Quebec, Canada

1997-1999  
Architectural Degrees (B Sci. / Arch), Ball State University, Indiana, USA

1999-2005  
Collaboration with Frank O' Gehry & Associates, Santa Monica, California, USA

2005-2008  
Collaboration with Nissen & Wentzlaff, Basel, Switzerland

2008-2018  
Collaboration with Herzog & de Meuron, Basel, Switzerland

RAYMOND GAËTAN

ARCHITECTURE + DEVELOPMENT

2018  
Co-Founded RGAD

Dein Architekt

Standort

Unsere Vision

Konzept

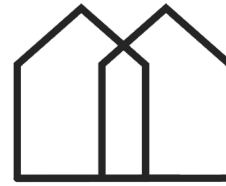
Renderings

Grundrisse

Ausblick

RAYMOND GAËTAN

ARCHITECTURE + DEVELOPMENT



PARK LIFE

Dein Architekt

Standort

Unsere Vision

Konzept

Renderings

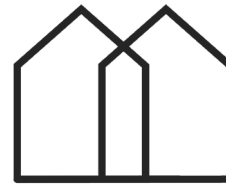
Grundrisse

Ausblick



RAYMOND GAËTAN  
ARCHITECTURE + DEVELOPMENT

... in collaboration with D. Wentzlaff



PARK LIFE

Dein Architekt

Standort

Unsere Vision

Konzept

Renderings

Grundrisse

Ausblick

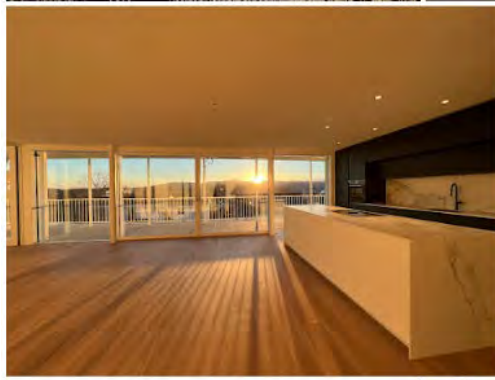


PANORAMA, Hohestrasse, Oberwil

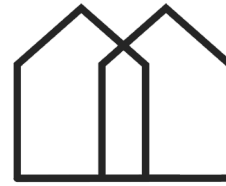
---

RAYMOND GAËTAN

ARCHITECTURE + DEVELOPMENT







PARK LIFE

Dein Architekt

Standort

Unsere Vision

Konzept

Renderings

Grundrisse

Ausblick



CLOUDLINE, Birnbaumweg, Bottmingen

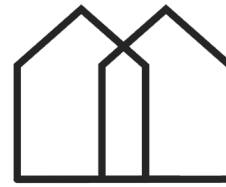
RAYMOND GAËTAN

ARCHITECTURE + DEVELOPMENT





RAYMOND GAËTAN  
ARCHITECTURE + DEVELOPMENT

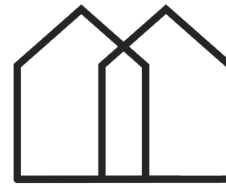


PARK LIFE

Dein Architekt  
Standort  
Unsere Vision  
Konzept  
Renderings  
Grundrisse  
Ausblick



RAYMOND GAËTAN  
ARCHITECTURE + DEVELOPMENT



PARK LIFE

Dein Architekt

Standort

Unsere Vision

Konzept

Renderings

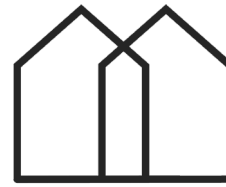
Grundrisse

Ausblick



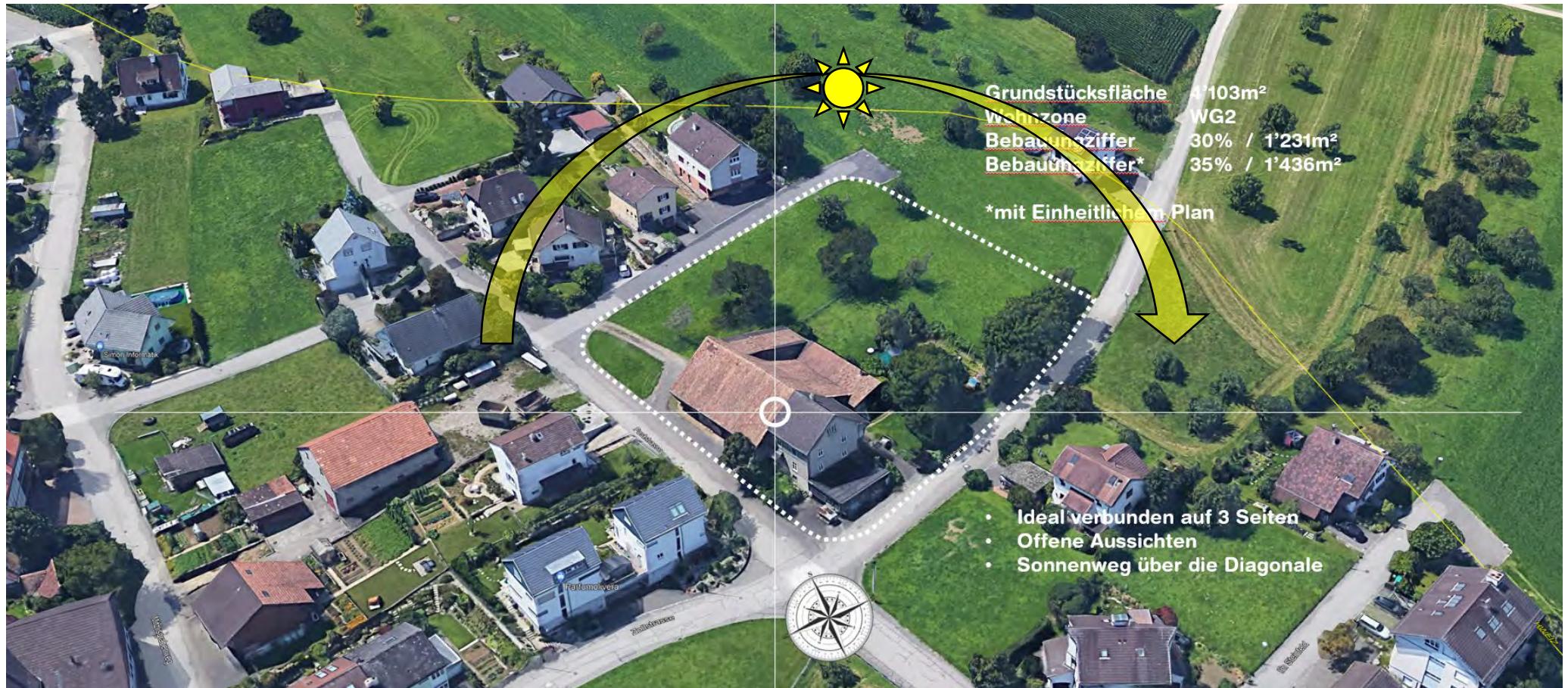
RAYMOND GAËTAN

ARCHITECTURE + DEVELOPMENT



PARK LIFE

Dein Architekt  
Standort  
Unsere Vision  
Konzept  
Renderings  
Grundrisse  
Ausblick



RAYMOND GAËTAN  
ARCHITECTURE + DEVELOPMENT



PARK LIFE

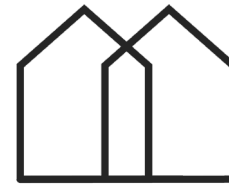
RAYMOND GAËTAN  
ARCHITECTURE + DEVELOPMENT



PARK LIFE

RAYMOND GAËTAN  
ARCHITECTURE + DEVELOPMENT





PARK LIFE

# Das Leben im Park

Dein Architekt

Standort

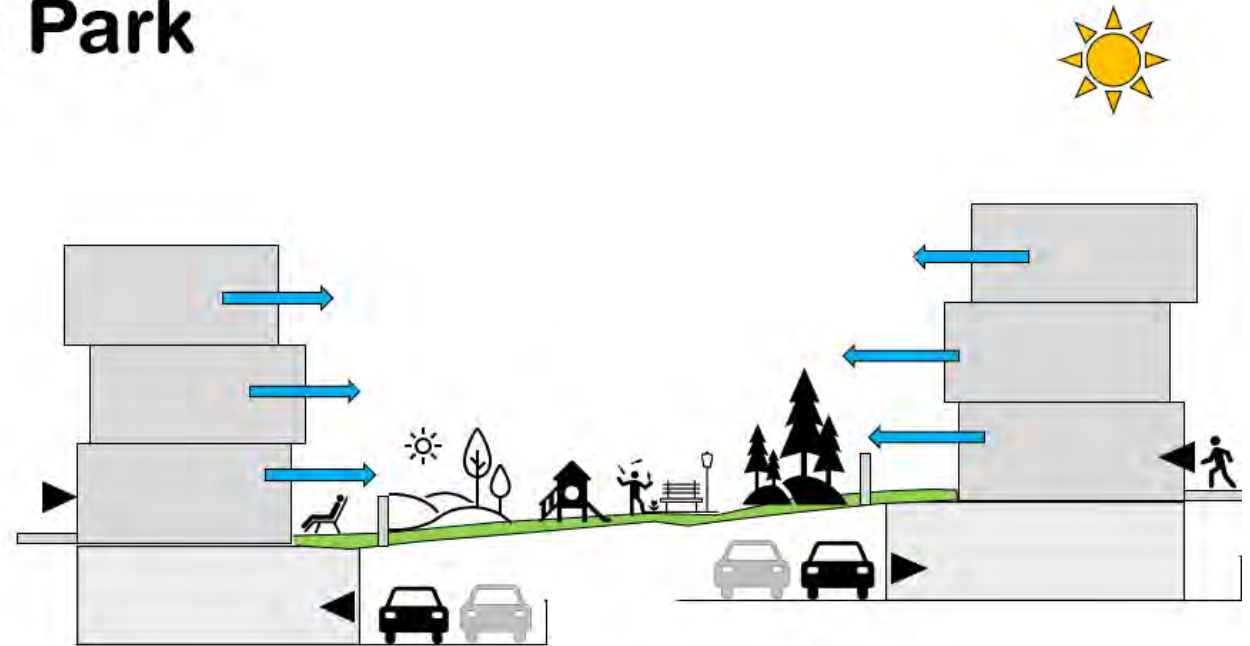
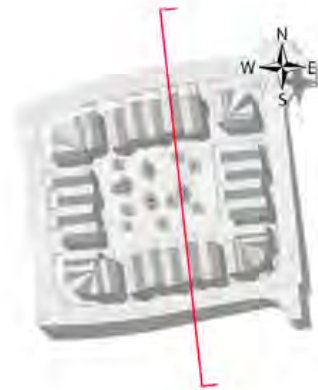
Unsere Vision

Konzept

Renderings

Grundrisse

Ausblick



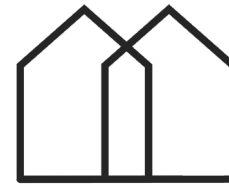
**Alle haben einen direkten Zugang von der Strasse**

**Alle haben Vor und Hinten Privat Garten**

**Alle können von einem grossen Gemeinschaftsgarten profitieren**

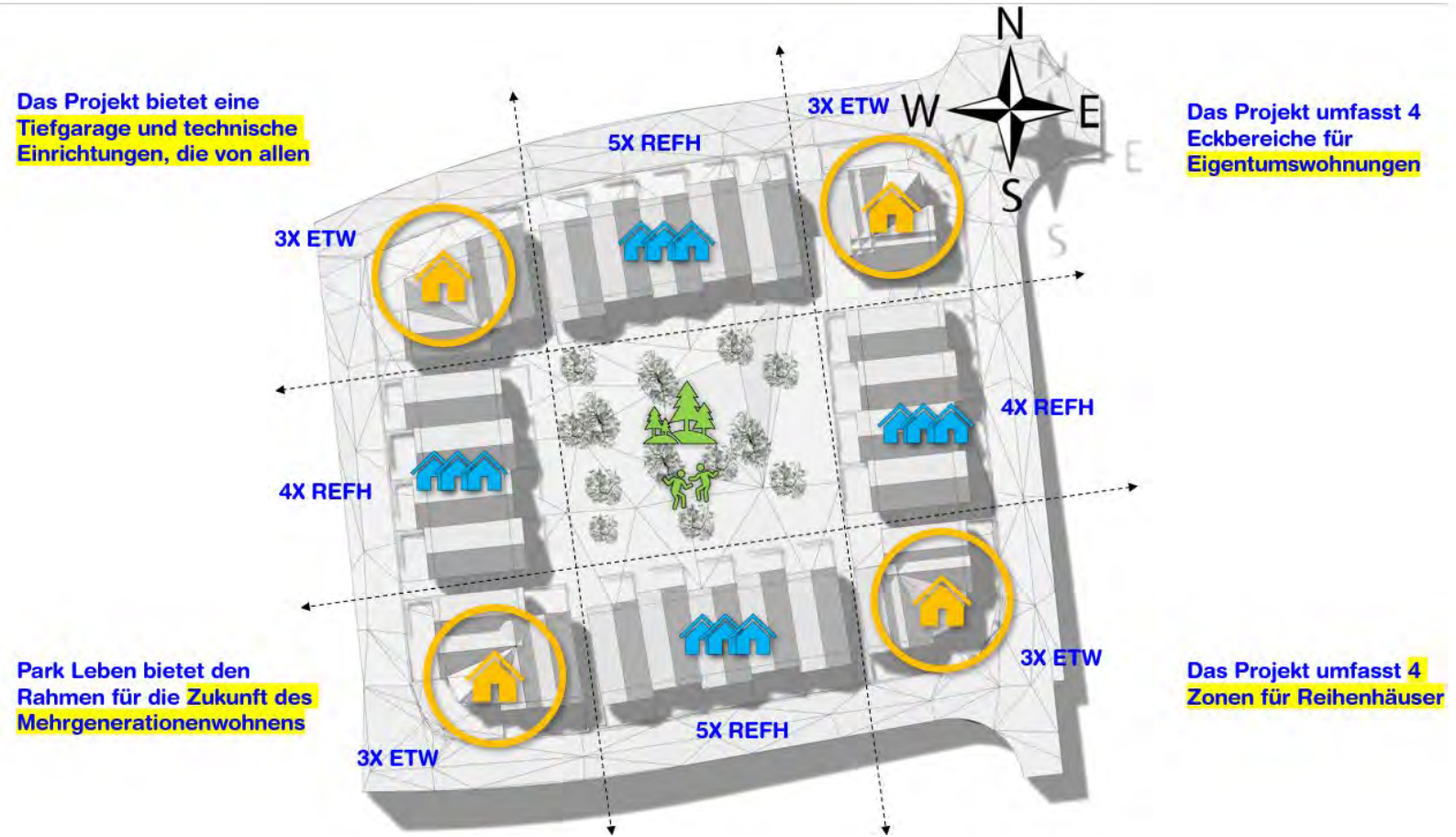
RAYMOND GAËTAN

ARCHITECTURE + DEVELOPMENT



PARK LIFE

Dein Architekt  
Standort  
Unsere Vision  
Konzept  
Renderings  
Grundrisse  
Ausblick

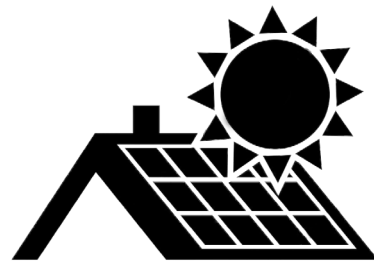




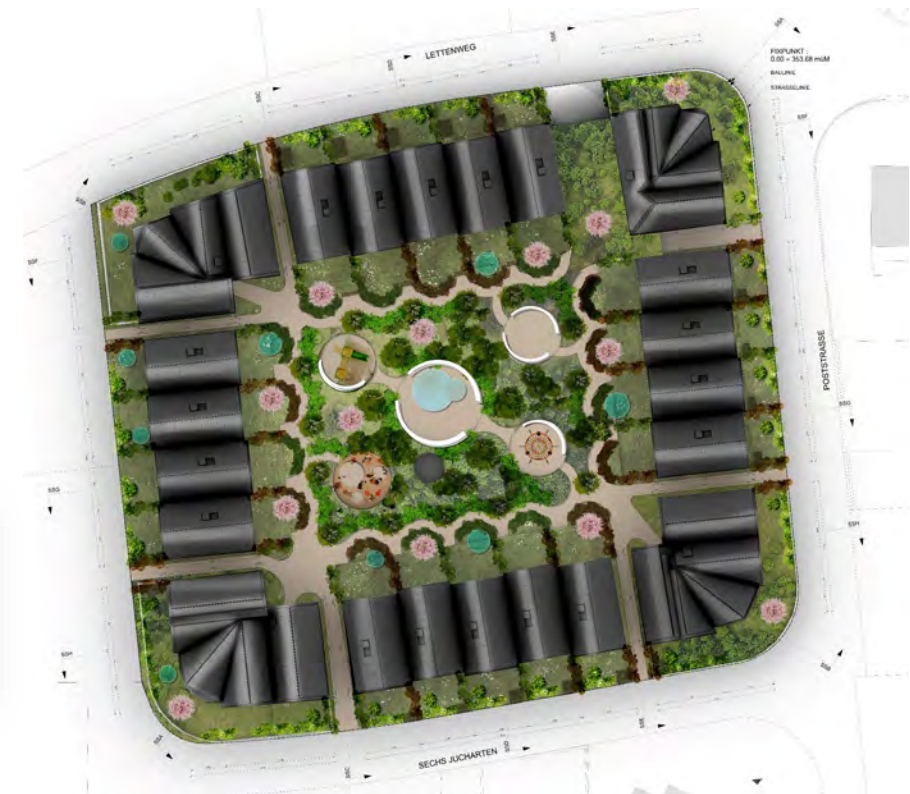
PARK LIFE

## PARK LIFE IST ENERGIEPOSITIV:

Unsere Photovoltaikanlage produziert mehr Strom, als unsere Gemeinschaft für Strom, Heizung und Mobilität benötigt.



|                                 |                          |
|---------------------------------|--------------------------|
| PV-Generatorfläche              | Ca. 1'450 m <sup>2</sup> |
| Anlageleistung                  | 323 kWp, 300 kVA         |
| Prognostizierte Nettoproduktion | Ca. 288'000 kWh pro Jahr |



Dein Architekt

Standort

Unsere Vision

Konzept

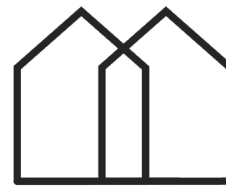
Renderings

Grundrisse

Ausblick

RAYMOND GAËTAN

ARCHITECTURE + DEVELOPMENT



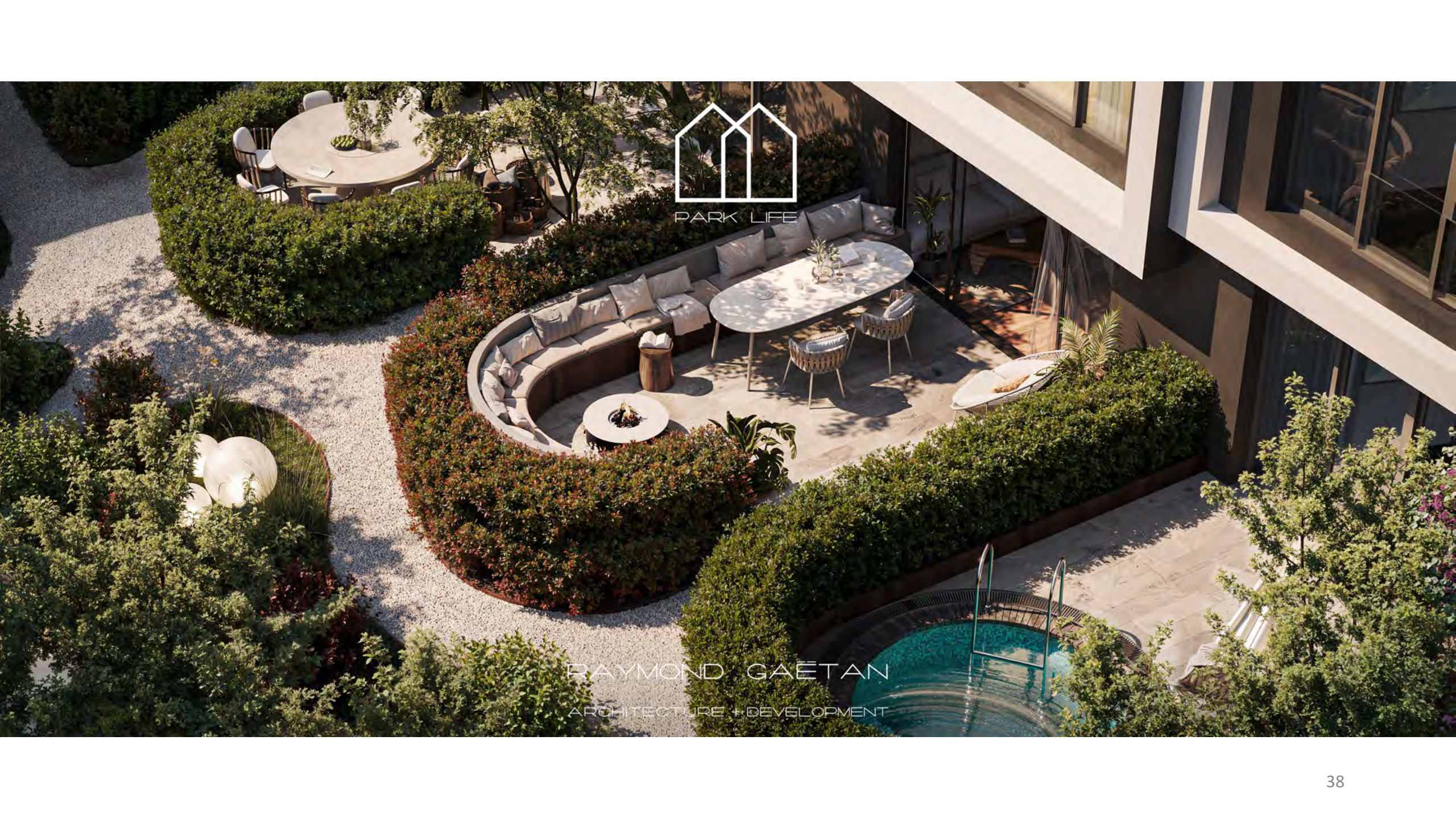
PARK LIFE

Dein Architekt  
Standort  
Unsere Vision  
Konzept  
Renderings  
**Grundrisse**  
Ausblick



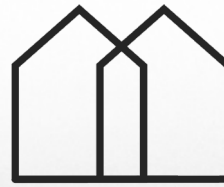
---

RAYMOND GAËTAN  
ARCHITECTURE + DEVELOPMENT



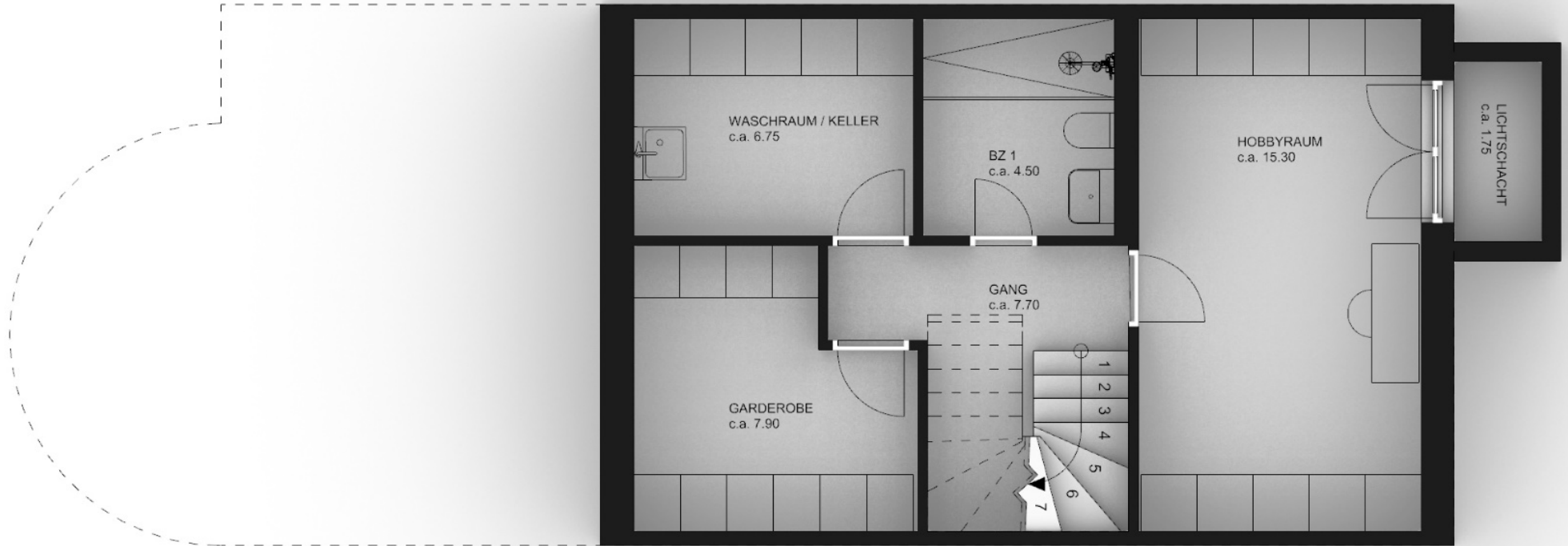
PARK LIFE

RAYMOND GAËTAN  
ARCHITECTURE + DEVELOPMENT



PARK LIFE

Dein Architekt  
Standort  
Unsere Vision  
Konzept  
Renderings  
Grundrisse  
Ausblick



Kreativ & Pragmatisch Grundriss

UG

RAYMOND GAËTAN  
ARCHITECTURE + DEVELOPMENT



PARK LIFE

Dein Architekt  
Standort  
Unsere Vision  
Konzept  
Renderings  
**Grundrisse**  
Ausblick



**Kreativ & Pragmatisch Grundriss**

**EG**

RAYMOND GAËTAN  
ARCHITECTURE + DEVELOPMENT



PARK LIFE

Dein Architekt  
Standort  
Unsere Vision  
Konzept  
Renderings  
Grundrisse  
Ausblick



Kreativ & Pragmatisch Grundriss

OG

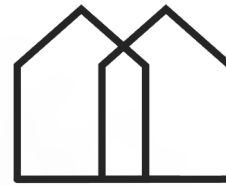
RAYMOND GAËTAN  
ARCHITECTURE + DEVELOPMENT





PARK LIFE

RAYMOND GAËTAN  
ARCHITECTURE + DEVELOPMENT



PARK LIFE

Dein Architekt  
Standort  
Unsere Vision  
Konzept  
Renderings  
**Grundrisse**  
Ausblick



**Kreativ & Pragmatisch Grundriss**

**DG – 2SZ OPTION**

RAYMOND GAËTAN  
ARCHITECTURE + DEVELOPMENT



PARK LIFE



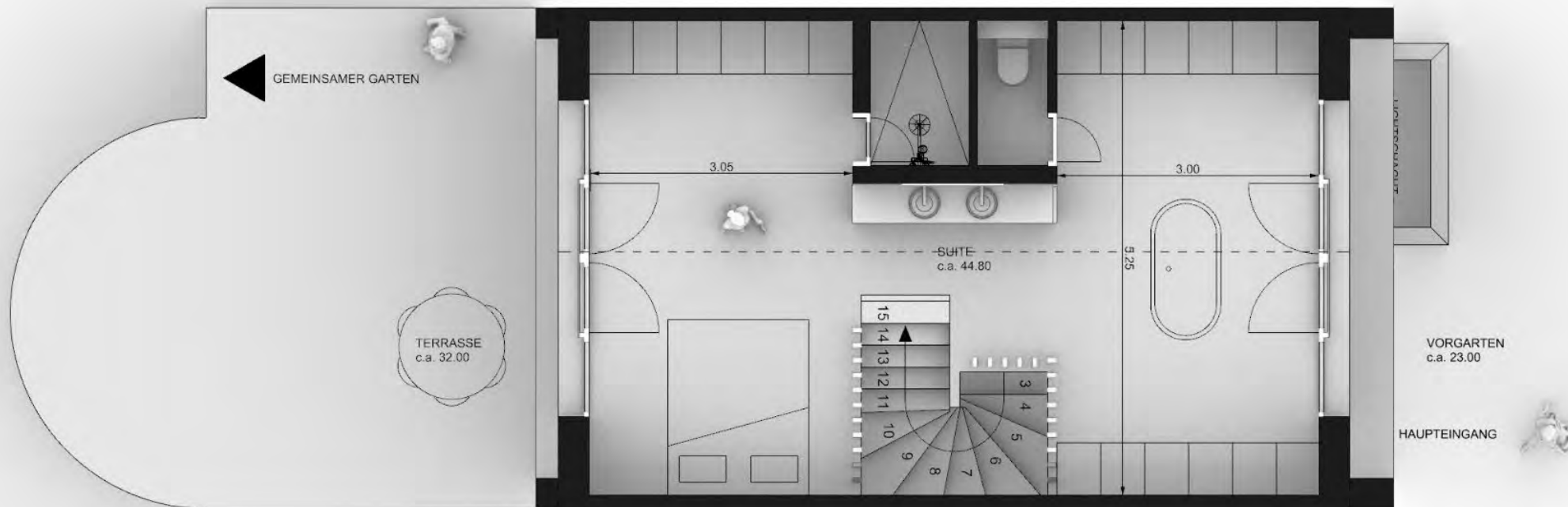
RAYMOND GAËTAN

ARCHITECTURE + DEVELOPMENT



PARK LIFE

Dein Architekt  
Standort  
Unsere Vision  
Konzept  
Renderings  
**Grundrisse**  
Ausblick



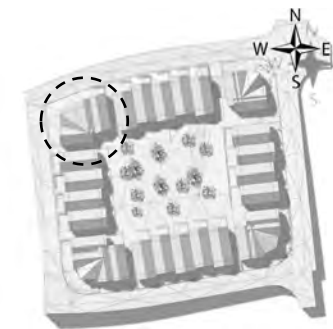
**Kreativ & Pragmatisch Grundriss**

**DG – SUITE OPTION**



PARK LIFE

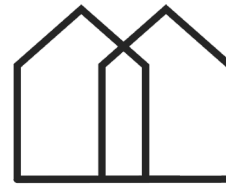
Dein Architekt  
Standort  
Unsere Vision  
Konzept  
Renderings  
**Grundrisse**  
Ausblick



---

RAYMOND GAËTAN

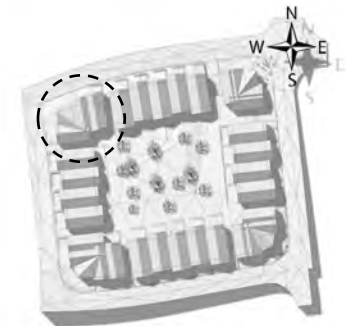
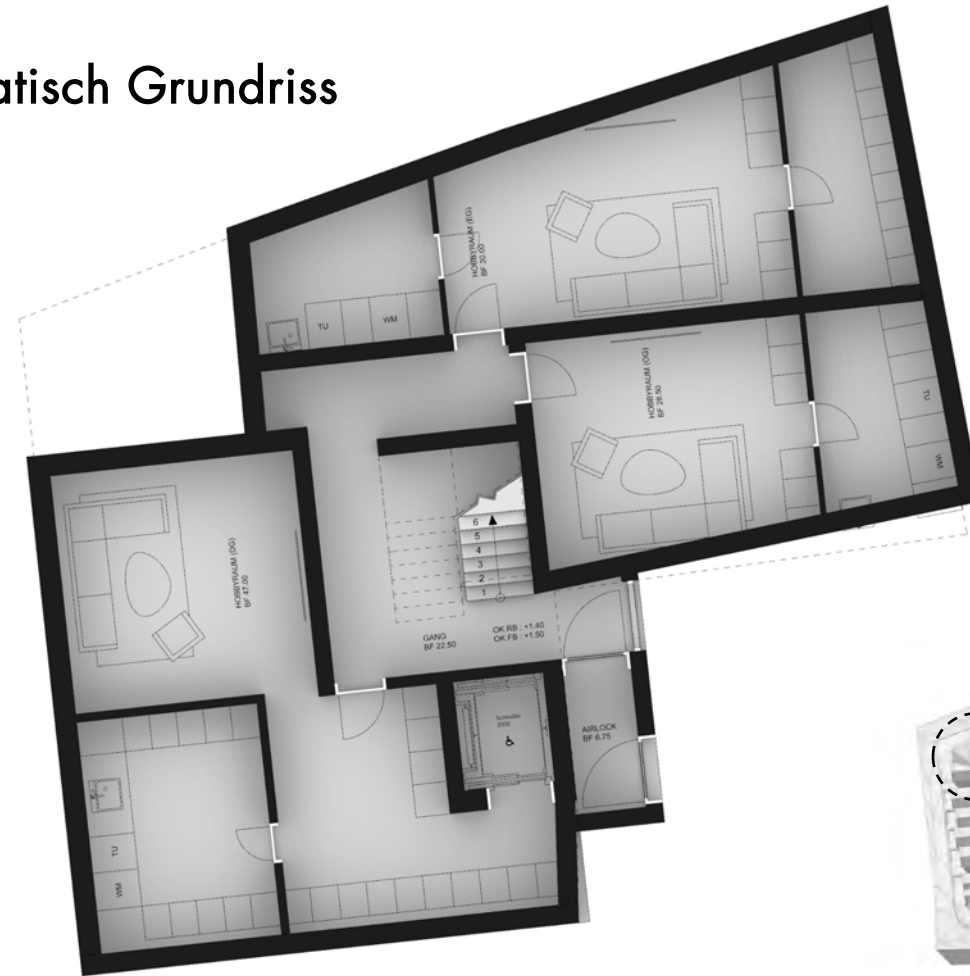
ARCHITECTURE + DEVELOPMENT



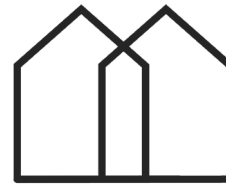
PARK LIFE

## Kreativ & Pragmatisch Grundriss

### UG



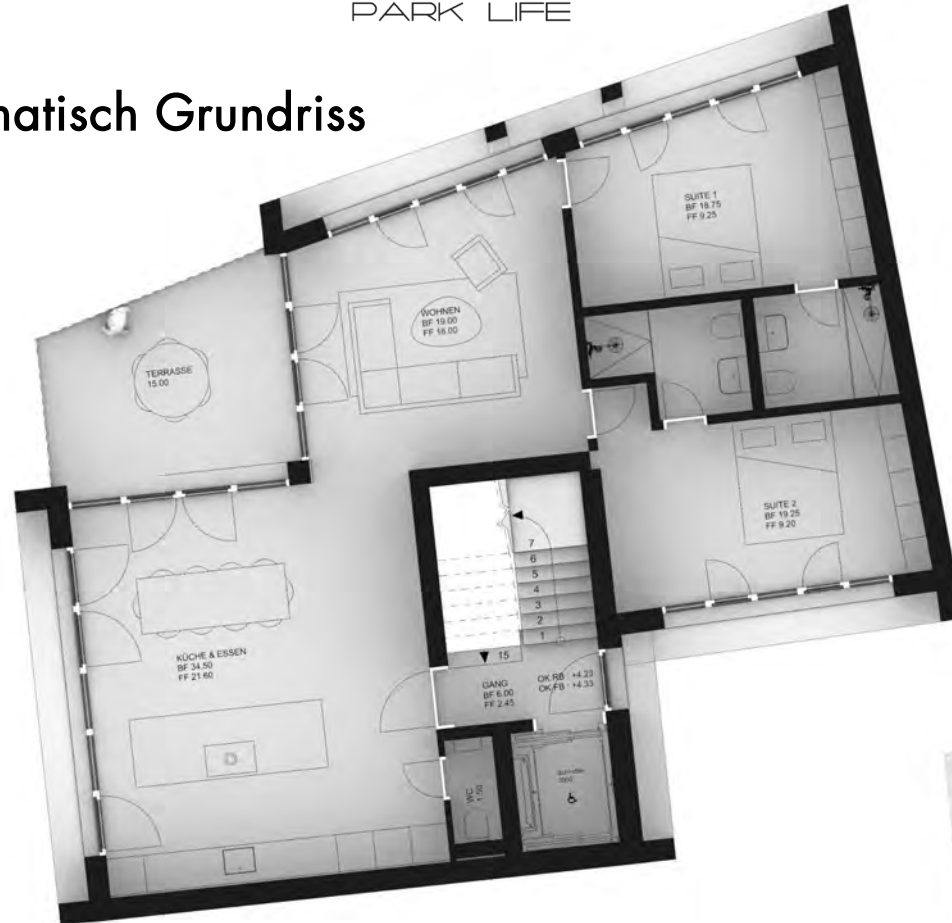
Dein Architekt  
Standort  
Unsere Vision  
Konzept  
Renderings  
**Grundrisse**  
Ausblick



PARK LIFE

## Kreativ & Pragmatisch Grundriss

EG



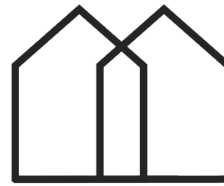
Dein Architekt  
Standort  
Unsere Vision  
Konzept  
Renderings  
Grundrisse  
Ausblick



PARK LIFE

RAYMOND GAËTAN  
ARCHITECTURE + DEVELOPMENT

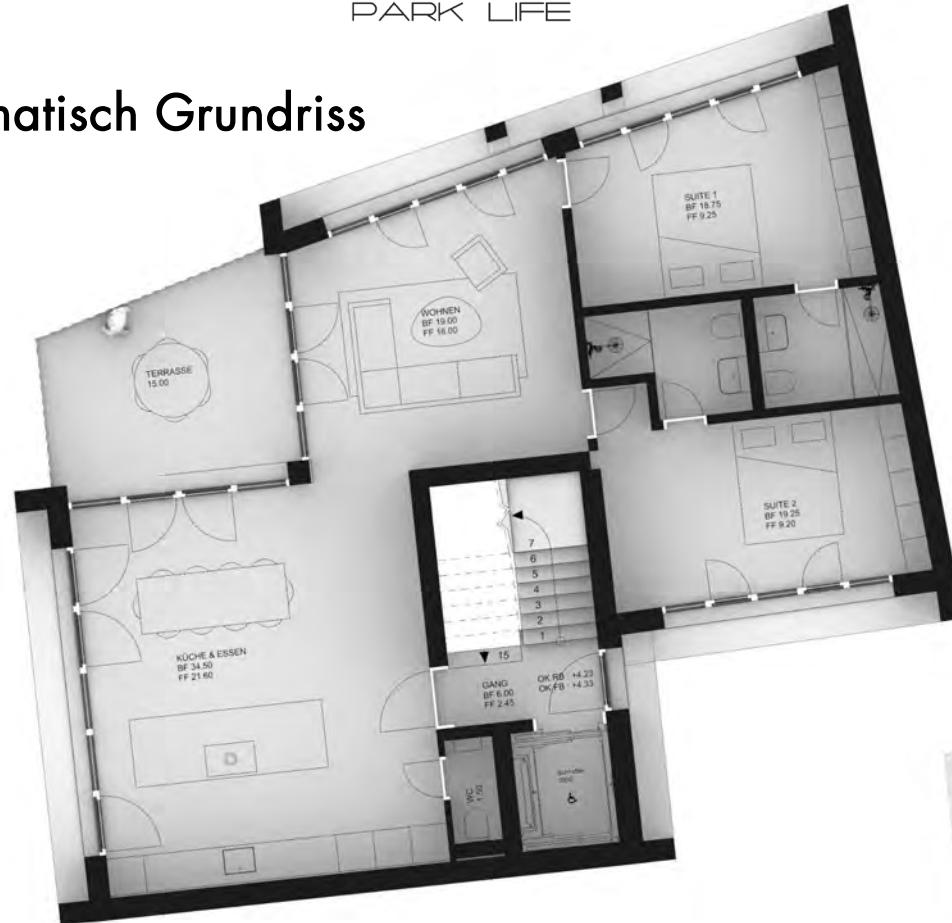




PARK LIFE

## Kreativ & Pragmatisch Grundriss

OG



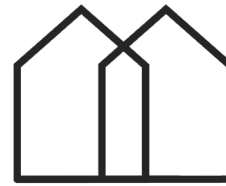
Dein Architekt  
Standort  
Unsere Vision  
Konzept  
Renderings  
Grundrisse  
Ausblick



PARK LIFE

RAYMOND GAËTAN

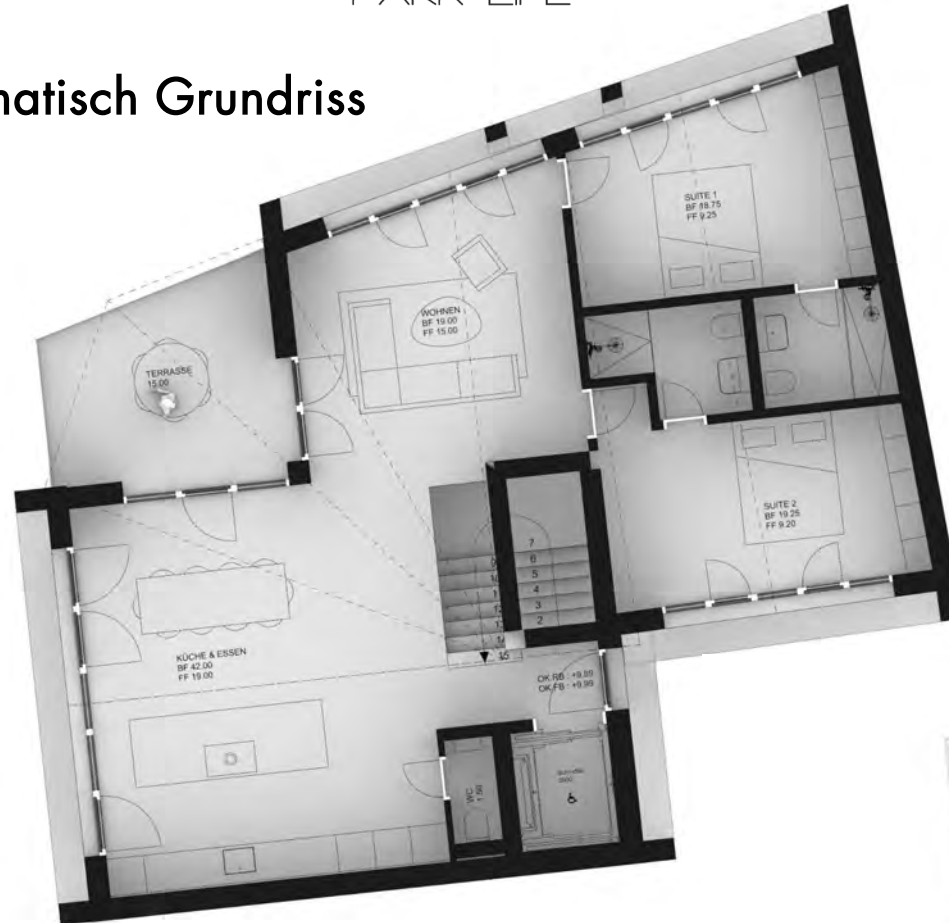
ARCHITECTURE + DEVELOPMENT



PARK LIFE

## Kreativ & Pragmatisch Grundriss

DG

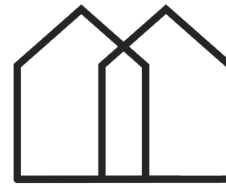


Dein Architekt  
Standort  
Unsere Vision  
Konzept  
Renderings  
Grundrisse  
Ausblick



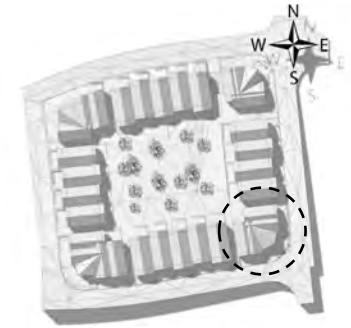
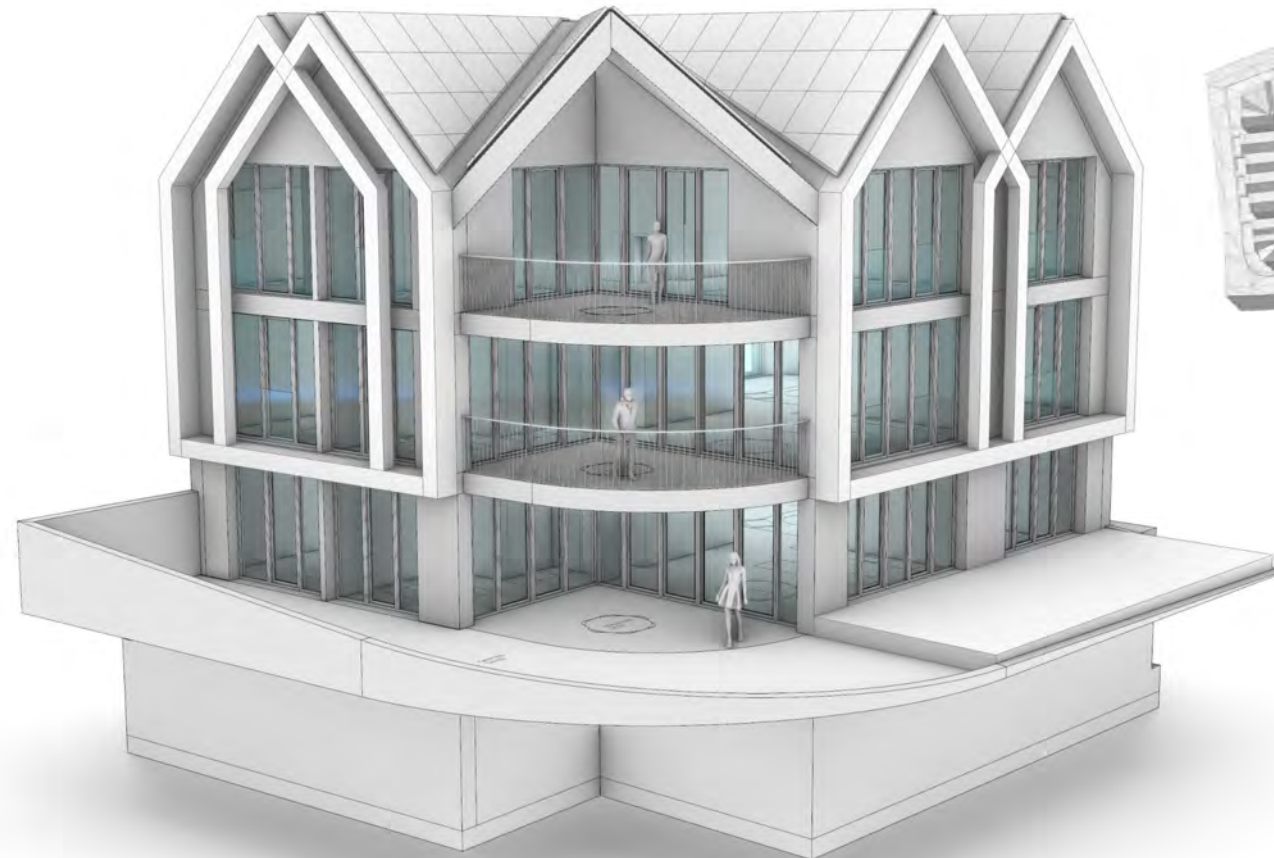
PARK LIFE

RAYMOND GAËTAN  
ARCHITECTURE + DEVELOPMENT



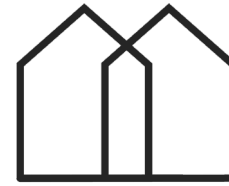
PARK LIFE

Dein Architekt  
Standort  
Unsere Vision  
Konzept  
Renderings  
**Grundrisse**  
Ausblick



RAYMOND GAËTAN

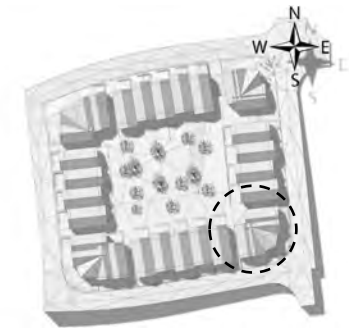
ARCHITECTURE + DEVELOPMENT



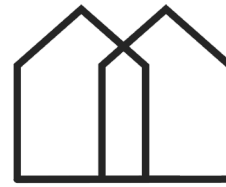
PARK LIFE

## Kreativ & Pragmatisch Grundriss

UG



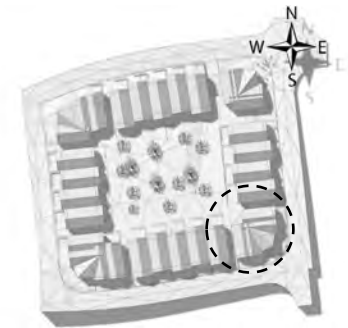
Dein Architekt  
Standort  
Unsere Vision  
Konzept  
Renderings  
Grundrisse  
Ausblick



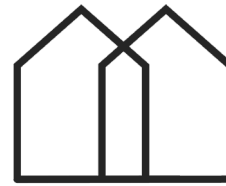
PARK LIFE

## Kreativ & Pragmatisch Grundriss

EG



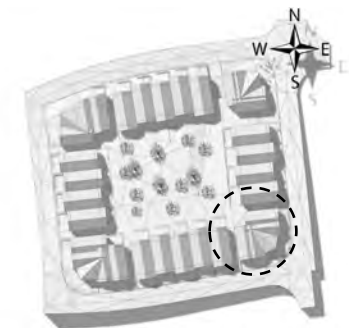
Dein Architekt  
Standort  
Unsere Vision  
Konzept  
Renderings  
Grundrisse  
Ausblick



PARK LIFE

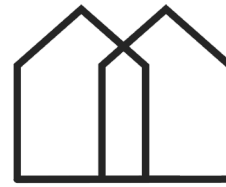
## Kreativ & Pragmatisch Grundriss

OG



Dein Architekt  
Standort  
Unsere Vision  
Konzept  
Renderings  
Grundrisse  
Ausblick

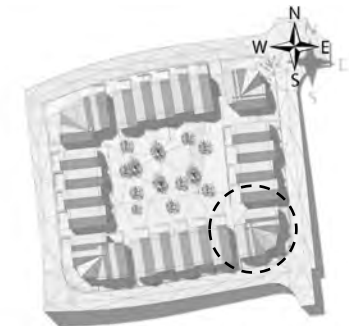




PARK LIFE

## Kreativ & Pragmatisch Grundriss

DG



Dein Architekt  
Standort  
Unsere Vision  
Konzept  
Renderings  
Grundrisse  
Ausblick



Alape



GESSI THE PRIVATE WELLNESS COMPANY



Sanitaranlagen

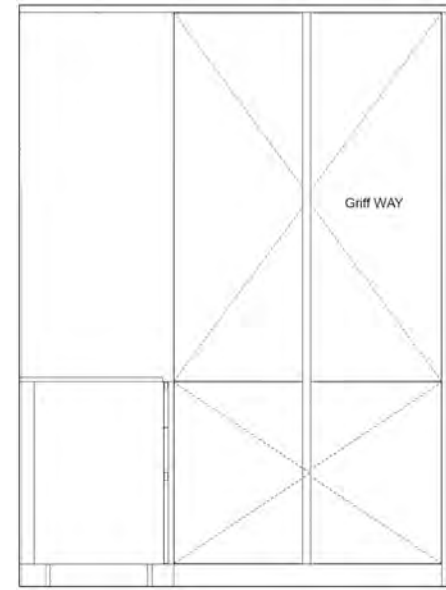
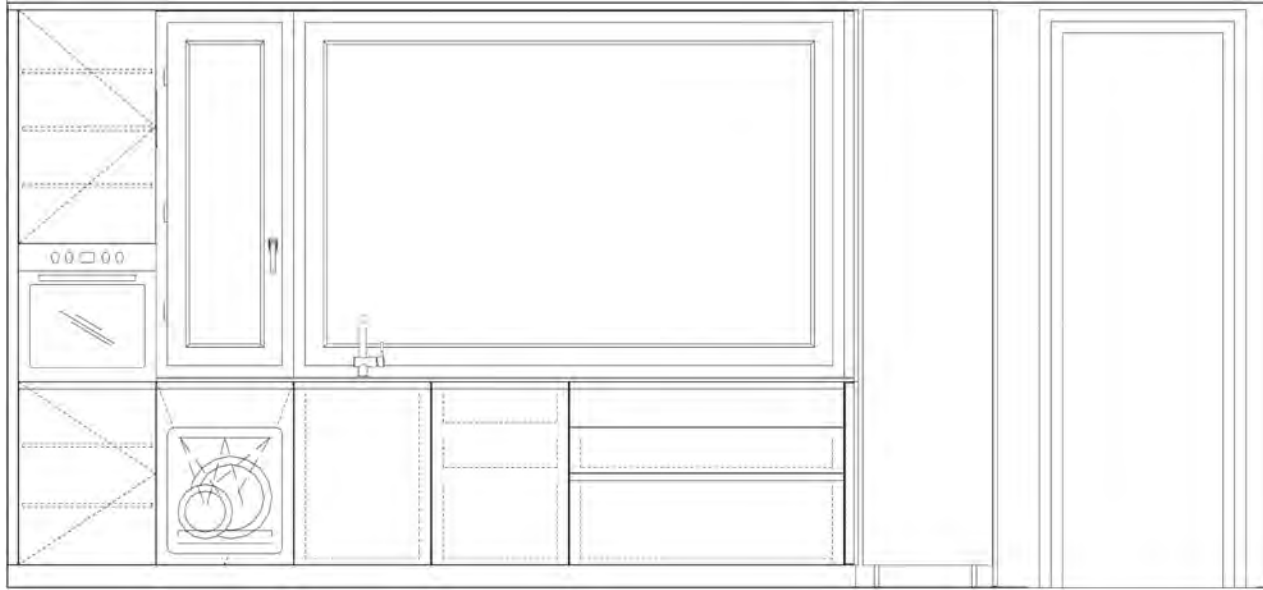


PARK LIFE



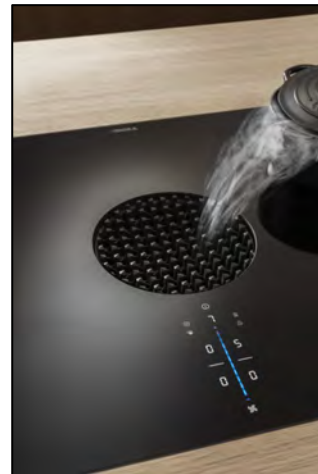
Hochwertige Oberflächenveredelung





Küche

**ernestomeda**



PARK LIFE



Waschküche option



PARK LIFE

LETTENWEG



17  
A: EG \*  
B: OG  
C: DG \*

18 19 20 21\* 22

1  
A: EG \* RESERVED  
B: OG \* RESERVED  
C: DG \* RESERVED

2 \* RESERVED

3 \*

4

5

16

15

14

13 \*

POSTSTRASSE

12  
A: EG \* RESERVED  
B: OG \* RESERVED  
C: DG \* RESERVED

11 10 9 8 7 \*

6  
A: EG \*  
B: OG  
C: DG

SECHS JUCHARTEN

RAYMOND GAËTAN  
ARCHITECTURE + DEVELOPMENT

Dein Architekt  
Standort  
Unsere Vision  
Konzept  
Renderings  
Grundrisse  
Ausblick



PARK LIFE

| HS  | TYPE                   | Gemeinsame Park | Private Garten / Sitzplatz / Balkon | Keller / Technik | Wohnfläche | TOTAL (ohne PP) | Notizen  |
|-----|------------------------|-----------------|-------------------------------------|------------------|------------|-----------------|--|
| 1a  | ETW N-O / EG           |                 |                                     |                  |            |                 | RESERVIERT   |
| 1b  | ETW N-O / OG           |                 |                                     |                  |            |                 | RESERVIERT   |
| 1c  | ETW N-O / DG           |                 |                                     |                  |            |                 | RESERVIERT   |
| 2   | REFH - POSTRASSE       |                 |                                     |                  |            |                 | RESERVIERT   |
| 3   | REFH - POSTRASSE       | 1200 / 30       | 56                                  | 6.75             | 163.65     | 1'300'000       | Mittelhaus "tief" / 6.5Z / Vorgarten 24m2 / Private garten 32m2          |
| 4   | REFH - POSTRASSE       | 1200 / 30       | 56                                  | 6.75             | 163.65     | 1'330'000       | Mittelhaus "tief" / 6.5Z / Vorgarten 24m2 / Private garten 32m2          |
| 5   | REFH - POSTRASSE       | 1200 / 30       | 56                                  | 6.75             | 163.65     | 1'350'000       | Eckhaus "hoch" / 6.5Z / Vorgarten 24m2 / Private garten 32m2             |
| 6a  | ETW S-O / EG           | 1200 / 30       | 120                                 | 15               | 117.25     | 1'080'000       | EG / 4.5Z / 1 Suite / 17m2 terrasse / 120m2 Private garten               |
| 6b  | ETW S-O / OG           | 1200 / 30       | n/a                                 | 15               | 124.50     | 1'070'000       | OG1 / 4.5Z / 1 Suite / 17m2 terrasse                                     |
| 6c  | ETW S-O / DG           | 1200 / 30       | n/a                                 | 15               | 139.75     | 1'330'000       | DG / 4.5Z / 1 Suite / 17m2 terrasse / Kathedrale Decke                   |
| 7   | REFH - SECHS JUCHARTEN | 1200 / 30       | 56                                  | 6.75             | 163.65     | 1'350'000       | Eckhaus "tief" / 6.5Z / Vorgarten 24m2 / Private garten 32m2             |
| 8   | REFH - SECHS JUCHARTEN | 1200 / 30       | 56                                  | 6.75             | 163.65     | 1'310'000       | Mittelhaus "tief" / 6.5Z / Vorgarten 24m2 / Private garten 32m2          |
| 9   | REFH - SECHS JUCHARTEN | 1200 / 30       | 56                                  | 6.75             | 163.65     | 1'335'000       | Mittelhaus "hoch" / 6.5Z / Vorgarten 24m2 / Private garten 32m2          |
| 10  | REFH - SECHS JUCHARTEN | 1200 / 30       | 56                                  | 6.75             | 163.65     | 1'360'000       | Mittelhaus "hoch" / 6.5Z / Vorgarten 24m2 / Private garten 32m2          |
| 11  | REFH - SECHS JUCHARTEN | 1200 / 30       | 56                                  | 6.75             | 163.65     | 1'390'000       | Eckhaus "hoch" / 6.5Z / Vorgarten 24m2 / Private garten 32m2             |
| 12a | ETW S-W / EG           |                 |                                     |                  |            |                 | RESERVIERT   |
| 12b | ETW S-W / OG           |                 |                                     |                  |            |                 | RESERVIERT   |
| 12c | ETW S-W / DG           |                 |                                     |                  |            |                 | RESERVIERT   |
| 13  | REFH - FELD            | 1200 / 30       | 56                                  | 6.75             | 163.65     | 1'405'000       | Eckhaus "hoch" + Feld / 6.5Z / Vorgarten 24m2 / Private garten 24m2      |
| 14  | REFH - FELD            | 1200 / 30       | 56                                  | 6.75             | 163.65     | 1'390'000       | Mittelhaus "hoch" + Feld / 6.5Z / Vorgarten 24m2 / Private garten 24m2   |
| 15  | REFH - FELD            | 1200 / 30       | 56                                  | 6.75             | 163.65     | 1'390'000       | Mittelhaus "hoch" + Feld / 6.5Z / Vorgarten 24m2 / Private garten 24m2   |
| 16  | REFH - FELD            | 1200 / 30       | 56                                  | 6.75             | 163.65     | 1'370'000       | Eckhaus "hoch" / 6.5Z / Vorgarten 24m2 / Private garten 32m2             |
| 17a | ETW N-W / EG           | 1200 / 30       | 115                                 | 15               | 108.00     | 1'090'000       | EG "hoch" + Feld / 3.5Z / 2 Suite / 15m2 terrasse / 115m2 private garten |
| 17b | ETW N-W / OG           | 1200 / 30       | n/a                                 | 15               | 106.50     | 1'040'000       | OG "hoch" + Feld / 3.5Z / 2 Suite / 15m2 terrasse                        |
| 17c | ETW N-W / DG           | 1200 / 30       | n/a                                 | 15               | 132.50     | 1'260'000       | DG "hoch" + Feld / 3.5Z / 2 Suite / 15m2 terrasse / Kathedrale Decke     |
| 18  | REFH - LETTENWEG       | 1200 / 30       | 56                                  | 6.75             | 163.65     | 1'390'000       | Eckhaus "hoch" + Feld / 6.5Z / Vorgarten 24m2 / Private garten 24m2      |
| 19  | REFH - LETTENWEG       | 1200 / 30       | 56                                  | 6.75             | 163.65     | 1'350'000       | Mittelhaus "hoch" + Feld / 6.5Z / Vorgarten 24m2 / Private garten 24m2   |
| 20  | REFH - LETTENWEG       | 1200 / 30       | 56                                  | 6.75             | 163.65     | 1'325'000       | Mittelhaus "tief" / 6.5Z / Vorgarten 24m2 / Private garten 24m2          |
| 21  | REFH - LETTENWEG       | 1200 / 30       | 56                                  | 6.75             | 163.65     | 1'285'000       | Mittelhaus "tief" / 6.5Z / Vorgarten 24m2 / Private garten 24m2          |
| 22  | REFH - LETTENWEG       | 1200 / 30       | 56                                  | 6.75             | 163.65     | 1'245'000       | Eckhaus "tief" / 6.5Z / Vorgarten 24m2 / Private garten 24m2             |
| PP  | PARKPLATZ              |                 |                                     |                  |            | 45'000          | Preis pro PP   |